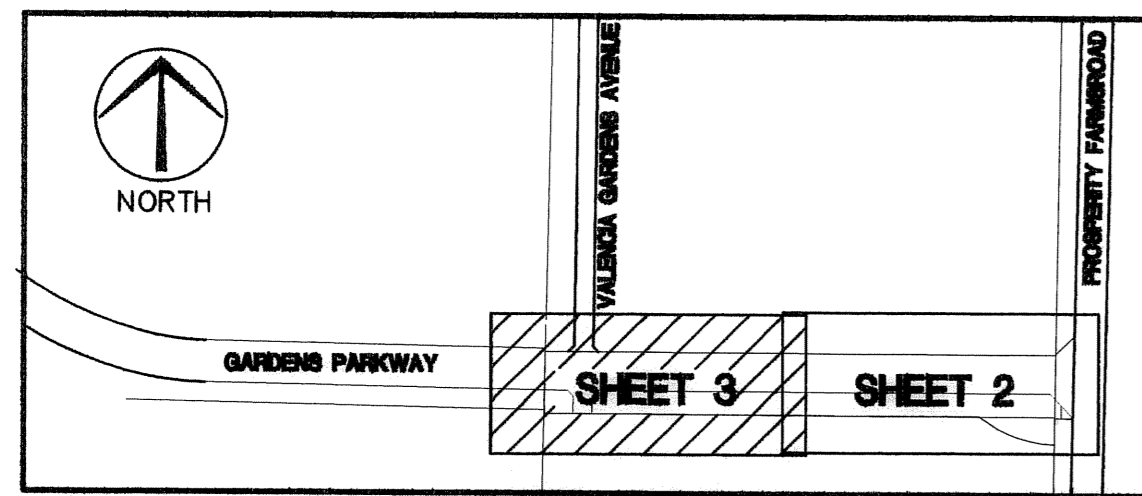


GRANDE AT PALM BEACH GARDENS - PLAT NO. 2

A PARCEL OF LAND LYING AND BEING WITHIN A PORTION OF SECTION 5, TOWNSHIP 42 SOUTH, RANGE 43 EAST,
ALSO BEING A REPLAT OF ALL OF PARCEL "P" AND A PORTION PARCELS "B" AND "N"
OF THE GRANDE AT PALM BEACH GARDENS, PLAT BOOK 92, PAGES 179-182
CITY OF PALM BEACH GARDENS, PALM BEACH COUNTY, FLORIDA

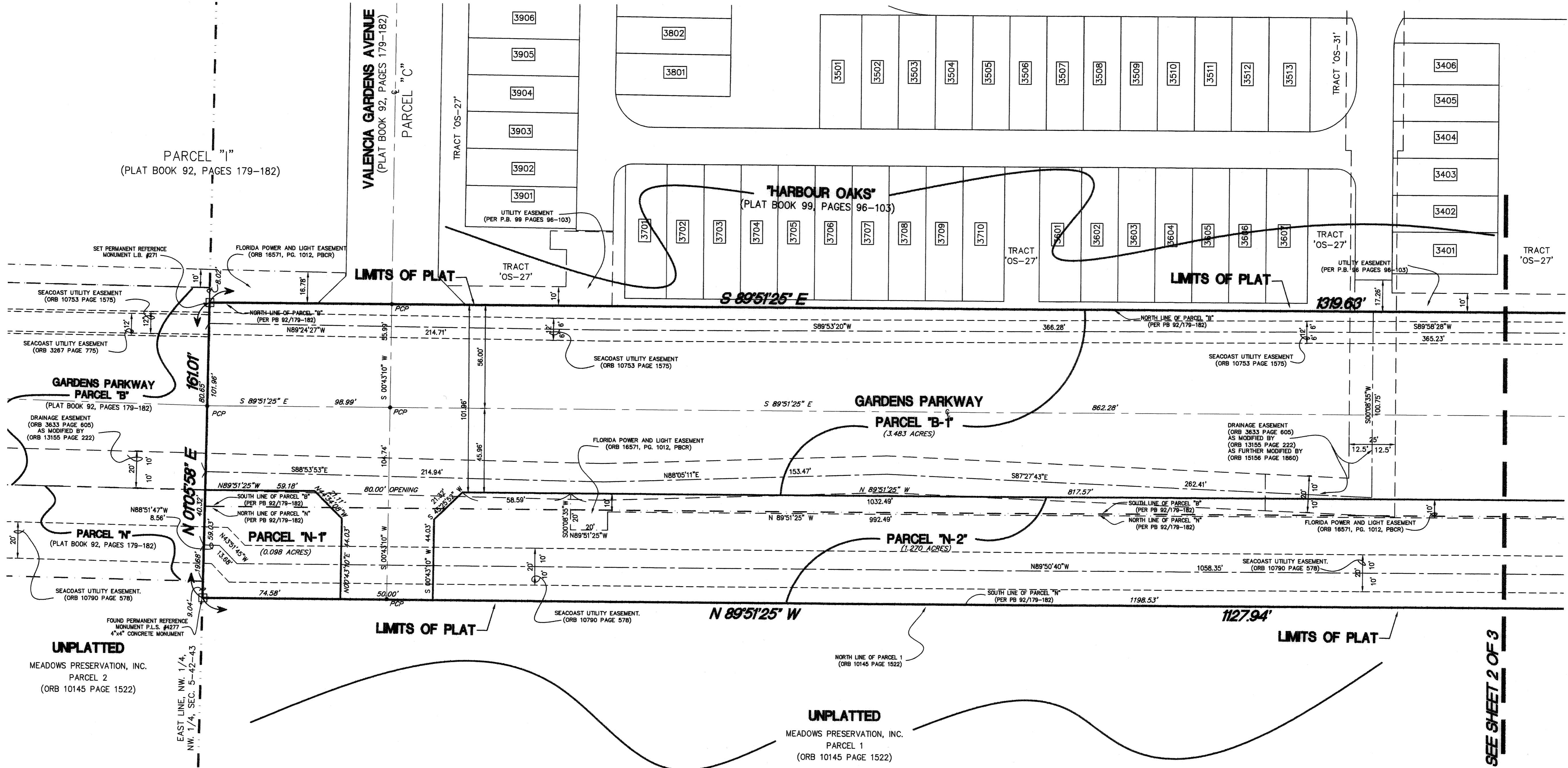
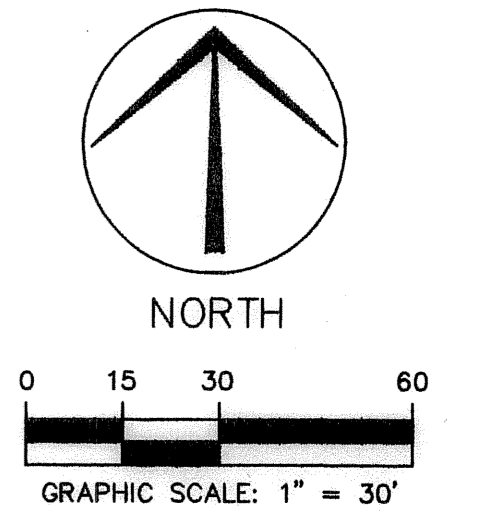
71



KEYMAP
NOT TO SCALE

STATE OF FLORIDA
COUNTY OF PALM BEACH
THIS PLAT WAS FILED FOR RECORD AT _____
THIS _____ DAY OF _____, 2004
AND DULY RECORDED IN PLAT BOOK NO. _____
ON PAGES _____
DOROTHY H. WILKEN,
CLERK OF THE CIRCUIT COURT
BY _____ DEPUTY CLERK

SHEET 3 OF 4



MATCH LINE SEE SHEET 2 OF 3

THIS INSTRUMENT WAS PREPARED BY:
BRENT A. SPENCER, P.S.M. #6388 OF
Craven-Thompson & Associates, Inc.
ENGINEERS • PLANNERS • SURVEYORS
5114 OKEECHOBEE BOULEVARD, SUITE 112, WEST PALM BEACH, FLORIDA 33417
TEL.: (561) 688-5010 FAX: (561) 688-1037
3563 N.W. 53RD STREET FORT LAUDERDALE, FLORIDA 33309
TEL.: (954) 739-6400 FAX: (954) 739-6409
FLORIDA LICENSED ENGINEERING, SURVEYING & MAPPING BUSINESS No. 271
FLORIDA LICENSED LANDSCAPE ARCHITECTURE BUSINESS No. C000114

JANUARY 2004 **02-0070.01**